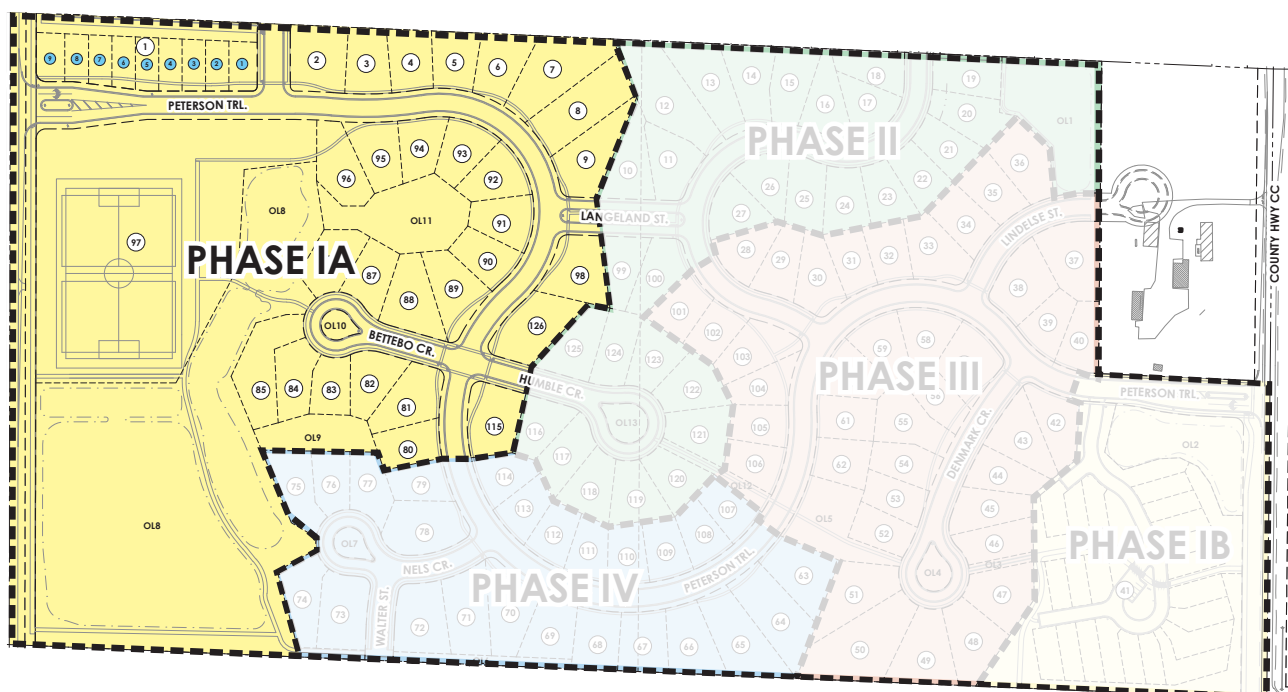
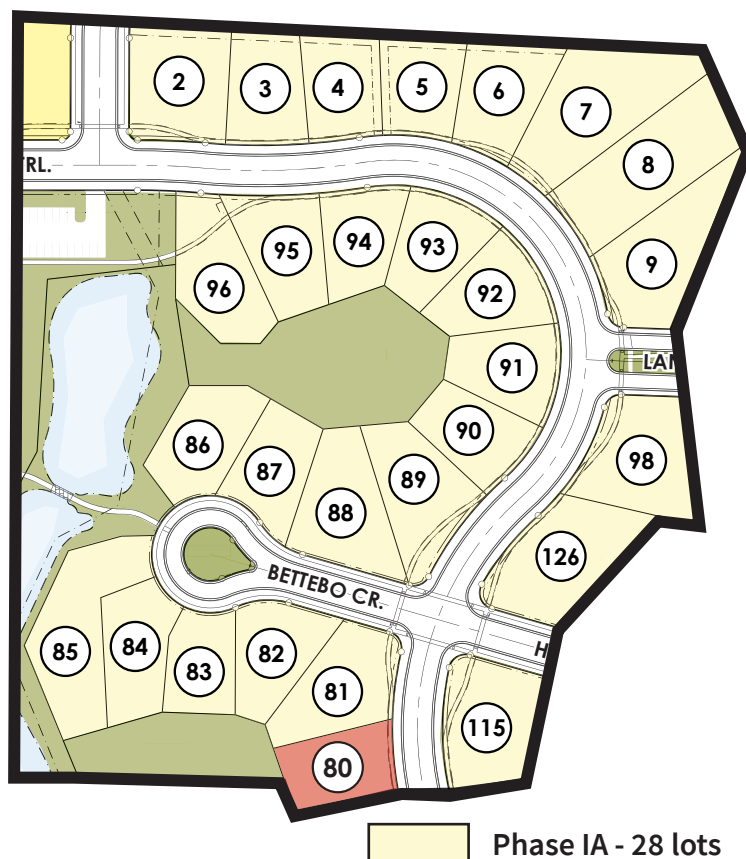
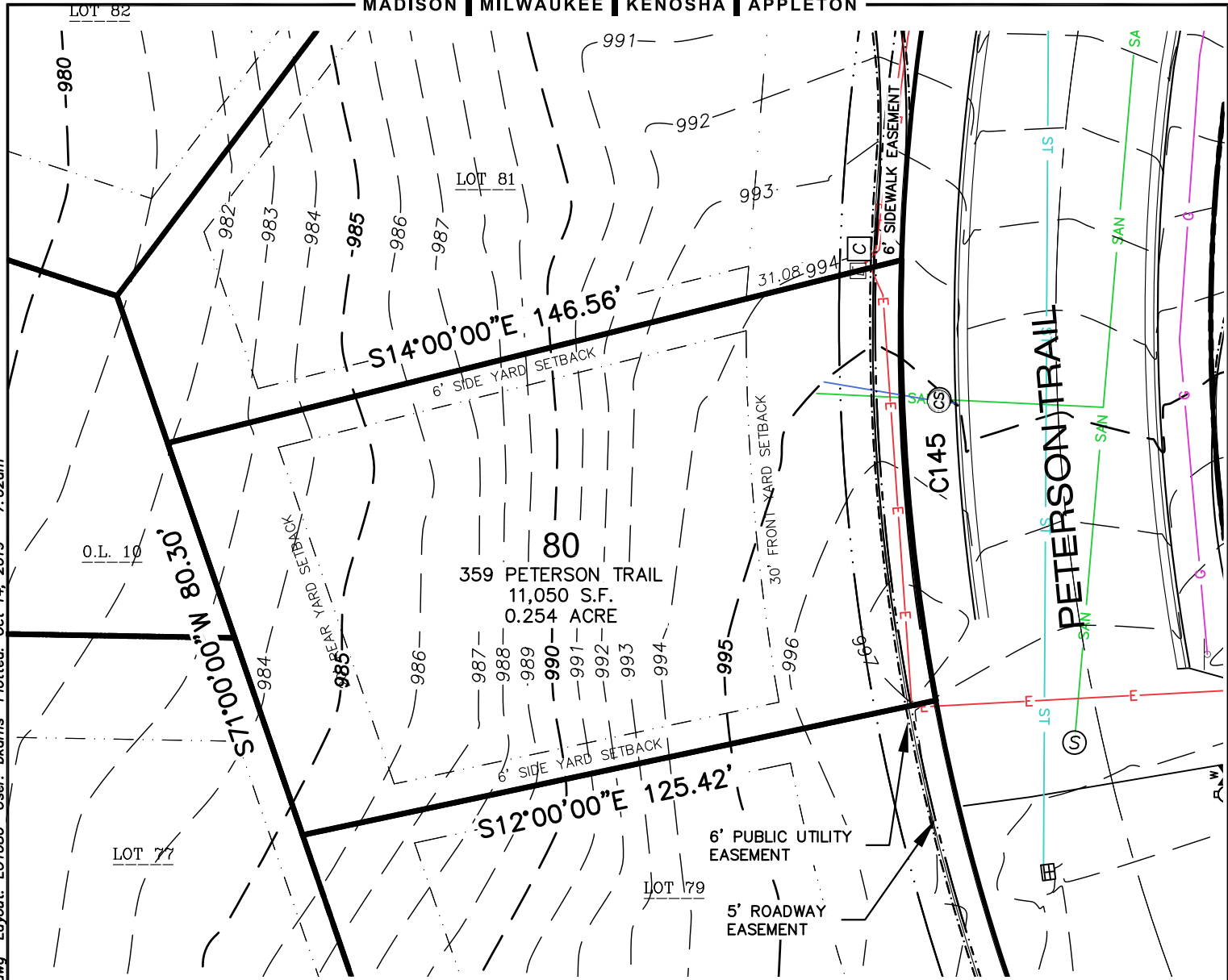


<b>Lot Number:</b>	80
<b>Price:</b>	\$134,900
<b>Lot Size:</b>	11,050 square feet
<b>Address:</b>	TBD
<b>Municipality:</b>	Village of Oregon
<b>School District:</b>	Oregon Area School District

### OREGON, WI

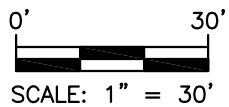
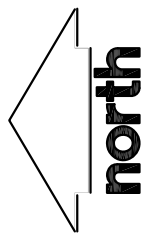
Oregon offers residents a small town atmosphere with access to urban amenities in both Madison and Janesville. Oregon has a nationally recognized school system, beautiful parks, as well as extensive sports and recreation programs. Oregon was voted one of the safest cities in Wisconsin for 2018 by the National Council for Home Safety and Security and the municipality prides itself on providing both residents and businesses with quality services.





**LEGEND**

- LOT BOUNDARY
- - -** RIGHT-OF-WAY LINE
- · - · -** PLATTED LOT LINE
- · - · -** EASEMENT LINE
- - -** SETBACK LINE
- E** UNDERGROUND ELECTRIC
- SAN** SANITARY SEWER
- W** WATER LINE
- ST** STORM SEWER
- (S)** SANITARY MANHOLE
- (ST)** STORM MANHOLE
- [ ]** CURB INLET
- [ ]** ELECTRIC PEDESTAL
- [ ]** CABLE PEDESTAL
- (CS)** CURB STOP/SERVICE VALVE
- [ ]** WATER VALVE



**NOTES**

THE ROADS AND SIDEWALKS ARE SHOWN AS CONSTRUCTED

THE MINIMUM ELEVATION FOR THE BASEMENT IS 987.60 AND THIS IS BASED ON THE ELEVATIONS OF THE SANITARY LATERALS.

**CURVE TABLE**

CURVE	LENGTH	RADIUS	DELTA	CHORD	CHORD BEARING
C145	85.73'	400.00'	12°16'46"	85.56'	S85°33'37"W

File: I:\2016\167339\DWG (PH2 V18)\Lot Exhibits (V18)\167339-Lot Exhibits 80-127.dwg Layout: LOT080 User: bikarns Plotted: Oct 14, 2019 - 7:02am

**JSD Professional Services, Inc.**  
 Engineers • Surveyors • Planners  
**MADISON REGIONAL OFFICE**  
 161 HORIZON COURT  
 VERONA, WISCONSIN 53593  
 (608)848-5060 PHONE | (608)848-2255 FAX  
[www.jsdinc.com](http://www.jsdinc.com)

PROJECT:  
**HIGHLANDS OF NETHERWOOD**  
 VILLAGE OF OREGON, WI

SHEET TITLE:  
**LOT 80**

JSD PROJECT NUMBER:  
 16-7339  
 DRAWN BY: BCK CHECKED BY:  
 DATE:  
 OCT 04, 2019

SHEET NUMBER:  
**1**